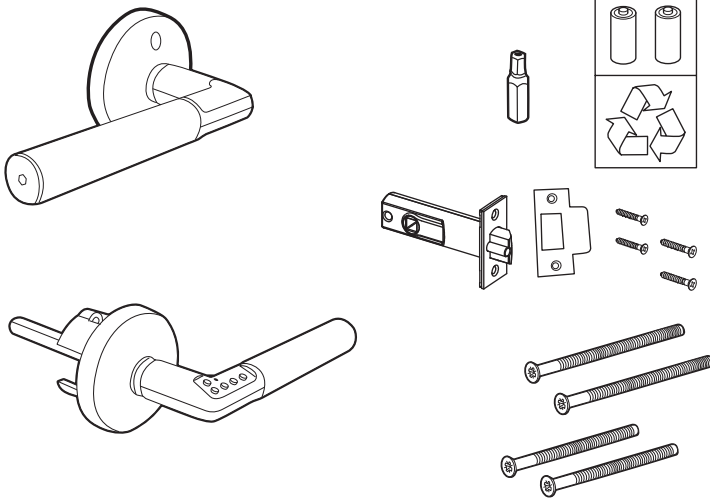
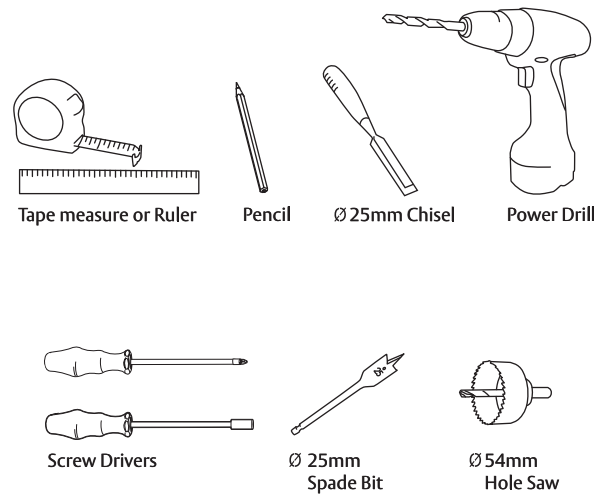


SUPPLIES

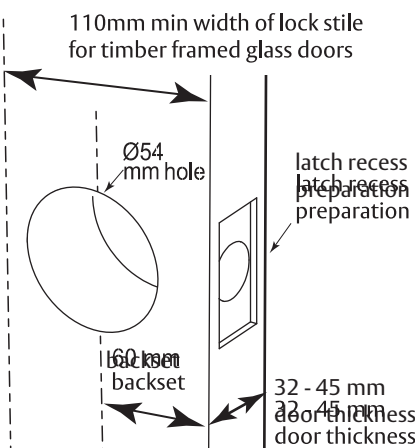
COMPONENTS PROVIDED



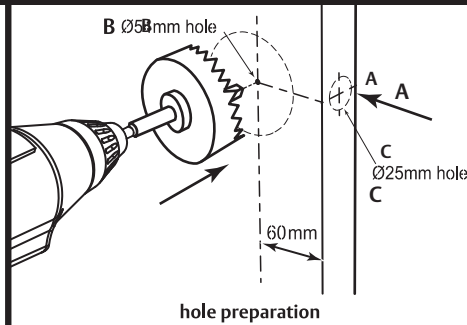
TOOLS REQUIRED



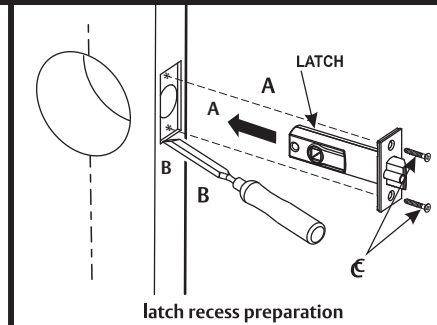
1 DOOR PREPARATION



Ensure your door fulfils the above minimum requirements.



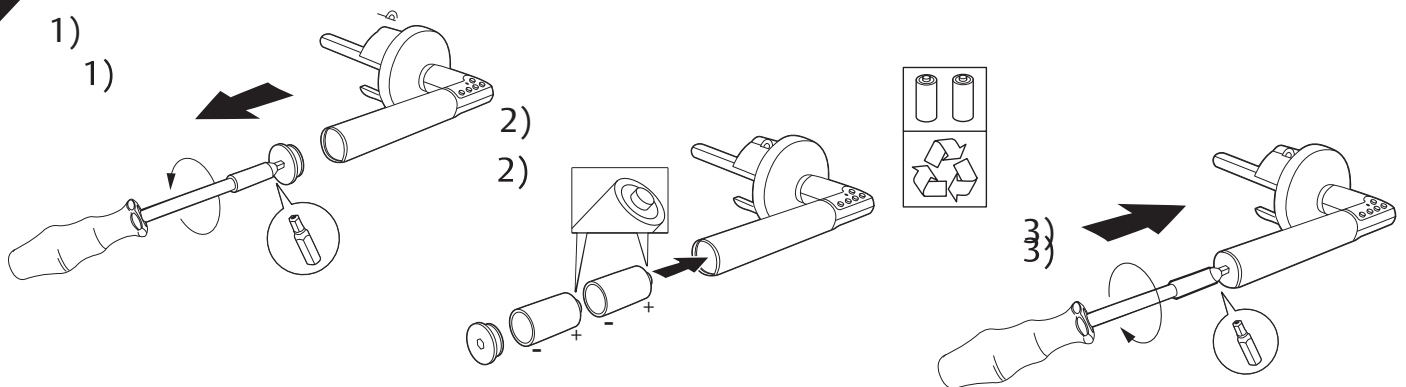
- 1**
- Mark latch centreline at the required height on the door edge.
*the recommended latch height from the floor is between 1040 and 1100mm.
 - Drill a Ø54mm hole in the position shown, from **both sides** of the door to prevent splintering.
 - Drill the Ø25mm latch hole horizontally to a minimum depth of 40mm.



- 2**
- Slide latch into hole and mark around latch face plate.
 - Chisel out face plate recess to appropriate depth.
 - Insert latch with angled face of bolt towards door jamb and fasten with the 2 screws provided.

NOTE: When completed make sure holes are free of any sawdust or loose material.

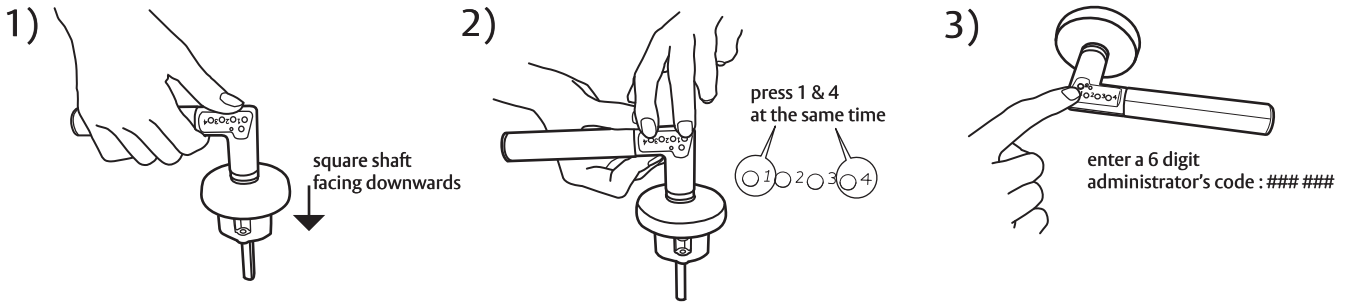
2 FIT BATTERIES



- Remove the battery closure cap using the tools supplied.
- Insert batteries in the appropriate polarity as shown.
- Firmly secure the battery closure cap back into position.

*Refer to the 'Operating Instructions' on page 3 for more information about battery use and replacement.

3 REGISTER AN ADMINISTRATOR'S CODE

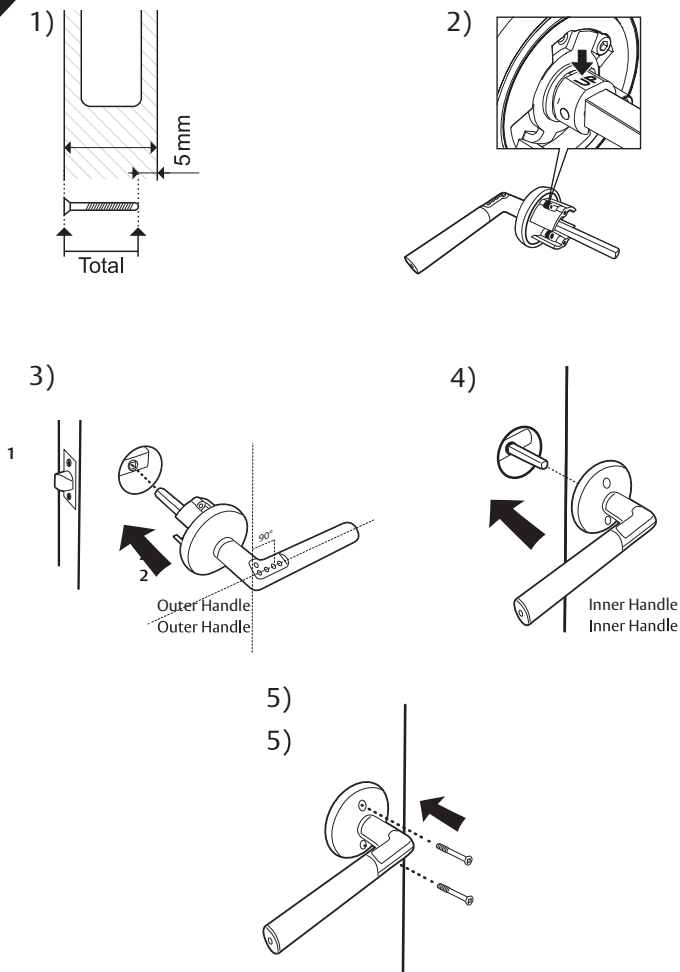


An administrator's code must be initiated prior to fitting the handle.

- 1) Hold the handle horizontally with the square shaft facing downwards, as shown on the illustration above.
- 2) Press buttons 1 and 4 at the same time. The LED flashes red rapidly. Release buttons. The LED lights steady green.
- 3) Enter a 6 digit administrator's code. The LED flashes green rapidly. The entered administrator's code is now activated.

IMPORTANT NOTE:
If the administrator's code is changed, all user codes will be erased. It is important to write your administrator's code on page 3 and store it safely. To change the administrator's code, repeat this procedure.

4 FIT HANDLES



- 1) Select an appropriate screw length.
- 2) Turn the spindle so the 'UP' label is at the top.
- 3) Locate the spindle on the outside handle in the latch, and push the handle rose firmly against the door face.
- 4) Locate the inside handle in the spindle and push the rose firmly against the face of the door.
- 5) Using the supplied screws, tighten the handles firmly. Test that both handles move downwards and return to the horizontal position.

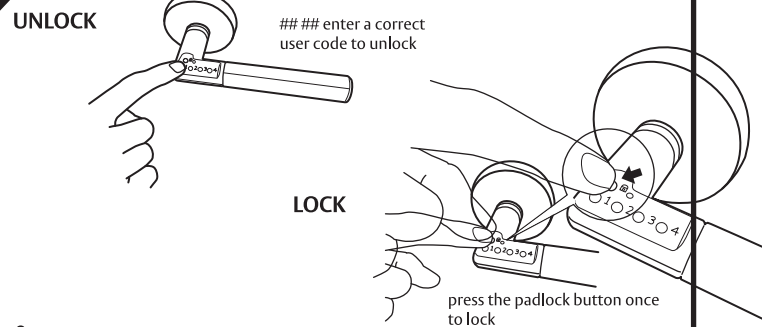
5 SET USER CODES

Create at least one user code following the steps below.

- 1) Enter programming mode by pressing the lock button for 5 seconds, until the LED lights steady red.
- 2) Enter the administrator's code within 5 seconds. The LED lights steady green.
- 3) Select one of the 9 memory positions by pressing pushbutton 1 the same number of times as the memory position; i.e. one depression for memory 1, two for memory 2, etc.
- 4) Wait for 2 seconds, until the LED lights steady green.
- 5) Create a code of 4, 5 or 6 digits. (numbers can repeat i.e. 123423)
- 6) Wait until your code is acknowledged by three short beeps.
- 7) Follow the steps above to store other codes in the remaining memory positions.
- 8) Exit programming mode by pressing the lock button.

See the User Code section on page 3 for further details on changing or removing a user code.

6 TEST TO UNLOCK & LOCK



WARNING: Test with door open

UNLOCK

- 1) Unlock the handle by entering a correct code. A correct code will cause the LED to flash green rapidly, if the sound is on it is also acknowledged by three short beeps. An incorrect code will cause the LED to flash red rapidly.

IMPORTANT NOTE:
The handle will remain unlocked once a correct code has been entered unless 'Automatic Locking' has been selected. See the Automatic Locking section under the 'Operating Instructions' on page 4 for further details.

LOCK

- 1) Lock the handle by pressing the padlock button once. The LED flashes red rapidly. If the sound is on, locking is also confirmed by a beep.

BATTERIES

The 8816 Code Handle is delivered with two CR2 batteries.

BATTERY CHANGE:

If the LED flashes red when you press the pushbuttons, and there is a slight delay to unlock the code handle after entering a correct code this is an indication that the batteries require replacement.

The code handle will retain all codes during the battery replacement.

It is important to choose good quality CR2 batteries for replacement.

When replacing batteries be aware of the following:

- Install the batteries in the correct polarity (refer to step 2 of 'Fitting Instructions' on page 1).
- Do not mix new and old batteries, or different types.
- Replace both batteries at the same time.
- Do not expose batteries to fire.
- Handle discharged batteries responsibly, and dispose of them according to environmental guidelines.
- Batteries should be kept out of the reach of children.

USER CODES

The 8816 Code Handle can have 9 different user codes under the administrator's code.

Enter New or Change Existing Code:

- 1) Enter programming mode by pressing the lock button for 5 seconds, until the LED lights steady red.
- 2) Enter the administrator's code within 5 seconds. The LED lights steady green.
- 3) Select one of the 9 memory positions by pressing pushbutton 1 the same number of times as the memory position; i.e. one depression for memory 1, two for memory 2, etc.
- 4) Wait for 2 seconds, until the LED lights steady green.
- 5) Enter the new code, which can comprise of 4, 5 or 6 digits. (numbers can be used more than once, i.e. 123423)
- 6) Wait until your new code is acknowledged by three short beeps.
- 7) Other codes can be stored in the remaining memory positions.
Follow the steps above and store as in step 3.
- 8) To exit programming mode and confirm your new codes press the lock button, or wait until the green LED turns off.

Remove Existing User Codes

- 1) Enter programming mode by pressing the lock button for 5 seconds, until the LED lights steady red.
- 2) Enter the administrator's code within 5 seconds. The LED lights steady green.
- 3) Select one of the 9 memory positions by pressing pushbutton 1 the same number of times as the memory position; i.e. one depression for memory 1, two for memory 2, etc.
- 4) Wait for 2 seconds, until the LED lights steady green.
- 5) Press the lock button to erase the selected position.
The LED flashes red rapidly, and the selected memory position is erased.
- 6)
- 7) To exit programming mode press the lock button, or wait until the green LED turns off.

DOCUMENT THE CODES

Write your user codes here:

Administration Code: _____

User Codes:

Code1 _____ Code 2 _____ Code 3 _____

Code 4 _____ Code 5 _____ Code 6 _____

Code 7 _____ Code 8 _____ Code 9 _____

SECURITY

INCORRECT CODE

If an incorrect code is entered five times consecutively, the code handle will be disabled for 3 minutes and cannot be opened. During this period, the led flashes red every five seconds. The disable can be overridden by entering a correct code twice.

RESETTING THE CODE MEMORY

The code handle can be reset to factory settings by changing the administrator's code. The lockset will require to be removed from the door. Refer to step 3 of 'Fitting Instructions' on page 2 for procedure.


When reset, the settings will be:

- Empty user codes
- Audio Signal: ON
- Auto Locking: OFF

AUDIO SIGNALS

The 8816 Code Handle is delivered with the audio signal enabled.

Audio Signals On or Off

- 1) Enter programming mode by pressing the lock button for 5 seconds, until the LED lights steady red.
- 2) Enter the administrator's code within 5 seconds.
The LED lights steady green.
- 3) Press the pushbutton 2 once to turn the audio signal on/off.
A low tone indicates that the signal has been turned off. A high triple-tone indicates that the signal has been turned on.
- 4)  **Confirm the change** and exit the programming mode by pressing the lock button, or wait until the green LED turns off.


AUTOMATIC LOCKING

The 8816 Code Handle is delivered in manual mode which can be switched to Automatic Locking mode.

WARNING! In automatic locking mode, the code handle will repeatedly attempt to re-lock within 9 seconds from opening. If the handle is not returned to its horizontal position within this time frame, the handle will remain unlocked.

This effect is similar to the temporary unlocking as described below.

Automatic Locking On or Off

- 1) Enter programming mode by pressing the lock button for 5 seconds, until the LED lights steady red.
- 2) Enter the administrator's code within 5 seconds.
The LED lights steady green.
- 3) Press the push button 3 once to change the mode to/from automatic locking.
A low tone indicates that Auto Locking has been turned off. A high triple-tone indicates that Auto Locking has been turned on.
- 4)  **Confirm the change** and exit programming mode by pressing the lock button, or wait until the green LED turns off.

Temporary Unlocking

- 1) Enter a correct user code and wait until the LED stops flashing.
- 2) Immediately press pushbuttons 1 and 4 at the same time.
The door is now unlocked until the next time the lock button is pressed or a user code is entered, after which the handle returns to automatic locking mode.

GENERAL SAFETY PRECAUTIONS

- The 8816 Code Handle is meant for use with approved batteries only. Usage of unapproved batteries or other power supply could be dangerous.
- Do not install the product outdoors or in wet environments:
 - o The product is classified according to IP 40, in the international standard IEC 60529 stating that it holds degree 4 protection against granular foreign bodies, and degree 0 in water protection.
 - o Do not expose to moisture, liquid, or heat due to risk of short circuit

Handle Batteries with Care:

- The Material Safety Data Sheet for lithium batteries states that the contents of the batteries can cause skin and respiratory system irritation, as well as burns. Lithium batteries can rupture and release both liquids and gases.
 - o Do not disassemble or short-circuit batteries.
 - o Do not recharge batteries.
 - o Do not dispose of batteries in fire.
 - o Do not allow metal objects to contact the battery terminals.
 - o Do not mix with used or other battery types (such as alkaline with carbon zinc).
 - o Do not over discharge batteries.
 - o To install or remove batteries, follow the equipment instructions.
 - o Keep batteries away from small children. If swallowed, consult a physician immediately.
 - o Remove batteries from the device when it is not in use.
 - o **Storage of batteries:** Store in a cool dry place before use.
Do not keep batteries at relative humidity of 65% or above.

Protect your Code Handle:

Disassembling or misuse of the Code Handle will void your warranty. Please ensure the Code Handle is used in accordance with the instructions and not subjected to any liquids, including water, chemicals, solvents or aerosols as these will damage the unit.

IMPORTANT NOTE:

If the product does not work remove the batteries and re-insert them according to step 2 of 'Fitting Instructions' on page 1.
If the product still does not work, try fitting new batteries of an approved type.